



Mahwah MATTERS

Spring 2011 Newsletter

What's Inside...

- **2**
- Township Directory
- **3**
- Mahwah Municipal Alliance
- **4**
- Solid Waste Collection
- **5**
- Greener Mahwah - Recycle
- **6/7**
- Mahwah Museum Mahwah Recreation
- **8**
- CERT
- **9**
- Fire Prevention
- **10**
- Fire Department
- **11/12**
- Mahwah Police Department Survey

MAHWAH ENERGY EFFICIENCY PROGRAM



The Township of Mahwah is participating in New Jersey's Clean Energy Program (NJCEP) sponsored by the New Jersey Board of Public Utilities. In the year 2010 the Township participated in Phase I of NJCEP and started installation of energy conservation measures in the Municipal Building on Corporate Drive. The available funding starts with a grant from the Energy Efficiency and Conservation Block Grant (EECBG) program. Funding for the EECBG program is provided by the federal government through the American Recovery and Reinvestment Act. (ARRA). The EECBG funding can be used in conjunction with the New Jersey Clean Energy Program called Direct Install.

In 2010 the EECBG provided for \$20,000.00 or 40% of clean energy efficiency upgrades totaling \$50,000.00 at the Municipal Building. The remaining \$30,000.00 or 60% of the cost was supplied by the Direct Install program which provides turnkey energy efficiency services by a participating approved contractor. No matching funds were required from the Township. The work will be at no cost to the Township.

After an initial energy assessment conducted by

the contractor, with the assistance of Vincent Villano from the Township Buildings and Grounds Division, a scope of work for the energy efficiency upgrades was developed. The work includes replacement of lighting fixtures, reflectors, occupancy sensors and switches.

Equally important is the fact that the replacement of older, inefficient equipment with more efficient alternatives is one of the most effective ways to control future energy use and utility bills. The estimated annual energy savings for the equipment upgrades at the Municipal Building is \$10,933.00.

With the assistance of Township resident Richard Wolf from the Sustainable Mahwah Green Team, the Township will participate in Phase II of the EECBG program and the Direct Install program in the year 2011. Together, the



Mahwah DPW Workers Vinny Villano and Tony Iannaccone

programs will provide up to \$125,000.00 of funding for completion of additional energy efficient conservation improvements at the Police Department, Fire Company No. 1, the Mahwah Museum and the Library. These additional improvements include installation of energy efficient HVAC units, boilers

and lighting fixtures. The additional aggregate annual energy savings are estimated at \$22,000.00 per year.

The Township will continue to search for new and innovative ways to conserve energy, reduce utility costs and to provide for a clean environment. ■



Mahwah DPW Workers Vinny Villano and Tony Iannaccone

MAHWAH MUNICIPAL ALLIANCE

Mahwah Municipal Alliance

www.mahwahalliance.org

The Mahwah Municipal Alliance (MMA) is a community outreach organization comprised of law enforcement officials, business executives and representatives from the educational system. The MMA is a 401 C3 tax exempt organization. The goal of the MMA is to help our children make good decisions and become great leaders in life. This is accomplished through a variety of MMA events. The membership of the MMA wishes to thank all the residents and local business community who have made donations to our cause. This past season the MMA hosted a number of premier and innovative events.

Cyber bullying Seminar - Under the direction of President Carolyn Blake the MMA sponsored a cyber bullying seminar presented by one of the nation's premier experts on the topic Sameer Hinduja of the Cyber Bullying Research Center. The seminar was given to over 150 local parents and talked about some of the inherent dangers of the internet, warning signs parents should be aware of, and the impact of



Left to right – Dr. Sameer Hinduja and MMA President Carolyn Blake prepare for MMA sponsored seminar on cyberbullying presented to parents at the Sheraton Hotel.

cyber bullying. For additional information on MMA sponsored seminars please visit our web site www.mahwahalliance.org.

Children's Holiday Party - The Police Department and MMA worked together to host a children's holiday party for less fortunate children in the Township. Over 250 children were in attendance and were treated to lunch, games and activities, and a visit from Santa who distributed gifts to all the children. In addition there was a special visit from New Jersey Nets star Kris Humphries who handed out Nets tickets to the children

and talked to them about making correct decisions and becoming leaders which is the mission of the MMA.

1st Annual Coat Drive - Recognizing these difficult economic times the Mahwah Police Department and MMA organized its first annual coat drive. Through the generosity of local residents over 1,000 coats and other items were collected in under two weeks. As a result over 500 coats were distributed to those in need. The remainder of the coats and clothing were distributed to a local church to be distributed.

Who's collecting your personal data and information and putting it on the Internet?

A web site called spokeo (www.spokeo.com) has caused a lot of concern among internet users, and we encourage residents to be aware of these types of sites as they are becoming more common and intrusive. This search engine gathers and publishes a wide variety of personal information for anyone who enters your name, e-mail address or other identifiers. Spokeo is a social network aggregator that collects information from several sources such as phone directories, dating sites, social networks, photo albums, marketing surveys, mailing lists, real estate listings, and government census.

The web site advertises itself as "not your grandma's phone book". The popular information gathering website offers a multitude of options for finding information about anyone. It suggests to know your income, religion, spouse's name, credit status, and the number of people in your household. It even offers a satellite shot of your house, complete with an estimated value. They also let you search for the username of Facebook friends and track down their personal details.

A trade group has even petitioned the Federal Trade Commission (FTC) to investigate the site though a representative of the FTC could not offer further details on an investigation.

Spokeo does charge a fee (as little as \$2.95 a month for a year's membership) for getting a detailed report, but this information continues to be available to anyone willing to pay a relatively small sum for personal information. People who want to receive this information do not have to show any legitimate reason to require or need this information.

If you would like to remove your personal information from the spokeo web site please take the following steps:

1. Go to www.Spokeo.com
2. Search your name and select the profile that matches your information
3. Once you've determined that you've located your profile you can then highlight and copy the URL.

4. Find and click on the privacy link on the bottom of the page.
5. Paste your URL into the appropriate field, enter your e-mail address, and the provided security code.
6. Click on remove listing.

We encourage residents to be diligent whenever providing personal information to anyone. Ask why they require it and if it is mandatory to be provided for purpose requested. Also inquire about their privacy policy in releasing such information. Lastly if you believe you've been the victim of identity theft please contact the Mahwah Police Department.

Looks Too Good To Be True ?

The old adage "if it looks too good to be true" has never been more accurate than in the current era of conducting business on the internet. Do you think you are a safe internet user? You may be at risk if you answer yes to any of the following questions:

- Do you visit websites by clicking on links within an e-mail?
- Do you reply to emails from companies or persons you are not familiar with?
- Have you received packages to hold or ship to someone on the internet?
- Have you been asked to cash checks or wire funds to a person or company representative you met on line?
- Would you cash checks or money orders received through an online transaction without first confirming their legitimacy?
- Would you provide your personal/banking information as a result of an e-mail notification?

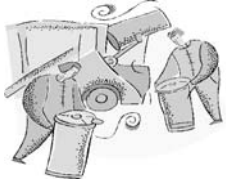
For more information and to test your on line practices visit:

www.LooksTooGoodToBeTrue.com and click on the tab "take our test".

A national public survey found that White Collar Crime/Computer Crime affects one in four U.S. households (an estimated 28 million people) Credit card fraud accounted for nearly 40% of victimization leading all categories. Learn to become a smart shopper and protect your identity.

TOWNSHIP OF MAHWAH, DEPARTMENT OF PUBLIC WORKS

SOLID WASTE COLLECTION SCHEDULE



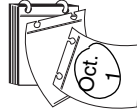
REMINDER!!!!!!! From June 1st through September 30th residential curbside garbage (solid waste) collections will occur two times (2x) per week as follows:

Monday & Thursday
Tuesday & Friday
Wednesday & Saturday

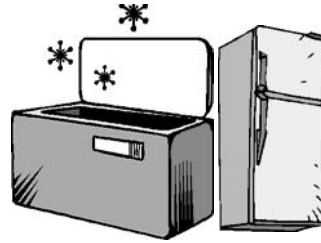


From October 1st through May 31st residential curbside collection will resume to one time (1x) per week as follows:

Monday
Tuesday
Wednesday



If a pickup is scheduled on a holiday, the pick up will be made on the following day. Likewise, if there is a snow emergency on a scheduled pick up day, collection will occur the following day.



Collection and disposal of refrigerators/freezers/air-conditioners for all residential curbside locations, residential dumpster locations, municipal property and Board of Education locations must be arranged, by appointment only by phone, directly from the resident to Suburban Disposal, Inc. at 1-973-227-7020.

Please note that effective January 1, 2011, State Law mandates that all “electronic equipment” including televisions, telephones, computer equipment, etc. must be recycled. Electronic items will not be picked up at any locations. All such items must be brought to the Township Recycling Center, 142 North Railroad Avenue, for proper disposal. ■



The Township Public Works Department will no longer collect grass clippings from the curb. Residents can dispose of grass clippings at the Recycling Center starting April 7, 2011 through September 30, 2011. The hours for grass disposal are Monday – Friday 7:00am to 3:00pm and Saturdays 7:00am to 1:00pm.

There will be no curbside brush pickup. All brush disposal will be done at the Recycling Center only. Residents can bring their brush to the Recycling Center on Saturdays between 7:30am and 12:30pm NO EXCEPTIONS.

Brush must be prepared as follows:

- Anything under four (4) feet must be bundled.
- Any brush over four (4) feet must have stems or butts facing the same way.
- All stumps and roots must be removed.

Firewood, roots and logs may be disposed of at the Center (Saturday Only) between 7:30am and 12:30pm.

PROPERTY MAINTENANCE

The Township of Mahwah has ordinances governing property maintenance, tree removal and soil movement. The Property Maintenance Ordinance requires that all exterior properties and premises be maintained in a clean, safe and sanitary condition.

- All weeds and grass shall not be in excess of 10 inches in height.
- Sidewalks, walkways, stairs, driveways and parking spaces must be kept in proper state of repair and maintained free from hazardous conditions.
- All accessory structures, including detached garages, fences and walls shall be maintained structurally sound and in good repair.
- The exterior of all structures including but not limited to wood, doors, windows, and window frames shall be protected from the elements and decay by painting or other protective covering treatments.
- Each home must display the street number assigned to it. The numbers must be displayed at least 3 inches high and 1/2 inch stroke.
- The Tree Removal Ordinance permits the cutting down of five (5) trees per year, with the diameter of 12 inches or more at ground level per lot per fiscal year. The exemption does not include trees which were indicated as trees to remain on the plan previously approved by the land use board of the Township. If you have any questions pertaining to trees, live or dead, please call 201-529-5757, ext. 246 for assistance.
- Inoperable Vehicles – No person shall park, leave, store or maintain

any inoperable vehicle for more than thirty days. Inoperable vehicle means any motor vehicle designed or manufactured primarily for use on public roadways and are not duly registered and insured.

- Signs – The placement of signs on telephone poles, trees, blocks or in the public right of ways is prohibited. The placement of a portable A-Frame sign is also prohibited.

HUMAN SERVICES/AFFORDABLE HOUSING/ACCESS TRANSPORTATION

2010 was a challenging year for Access Transportation since two long-term drivers (Mavis and Carol) both retired. We feel this is an appropriate time to thank them and extend to them good luck and good health in retirement. Marthina and Beverly have filled the driving positions. Mahwah offers the same services we have had in the past. Some of the places we routinely transport to are: food and clothing shopping; rides to Midland Park Senior Center; and other Day Centers; as well as, doctor and various appointments that fit into our daily schedule. The vans are on the road Monday through Friday 8am to 3:30pm. For appointments and additional information contact Access Transportation at 201-529-2691.



Left to Right: Beverly Valenti and Marthina Suazo, Drivers Checking Their Scheduled Appointments.

Mahwah’s Affordable Housing Program is also administered by the Human Services Staff. You can download an application from the Township’s Website www.mahwahtwp.org or contact Human Services at 201-529-5757, ext. 206 or 205.

As a reminder, the Ramapo Reformed Church sponsors a free Clothing Closet and is open to the public on Wednesday’s 9:30am to noon. Call Dolores Raiz for a referral.

If, at any time you need help in locating an agency or service, call Human Services for assistance.

The Human Services Department thanks everyone who helped to make the Holiday Season a little more joyous for Mahwah friends in need. The staff wishes everyone a Happy and Healthy New Year.

Keep Mahwah Green - Recycle

Bergen County Utilities Authority – Recycling Dates

The Computer and Electronics Recycling Program, Mobile Paper Shredding and Tire Recycling Program will be held:

Date: Saturday, June 25, 2011

Time: 9am – 2pm (rain or shine)

Location: Bergen County Campgaw Mountain Reservation
200 Campgaw Road, Mahwah, NJ

Computer & Electronics Recycling Program

Recycling – one “byte” at a time!

The Bergen County Utilities Authority Computer and Electronics Recycling Program is FREE for all Bergen County residents. Proof of residency is required. NO MATERIALS FROM BUSINESSES WILL BE ACCEPTED.



Mobile Paper Shredding



All Bergen County residents are eligible to participate in Bergen County’s Mobile Paper Shredding events for personal documents. Limit your documents to 4 bags/boxes weighing no more than 10 lbs. each. No commercial generators permitted.

Tire Recycling Program

Four (4) tire limit per person, per delivery. Proof of Bergen County residency required. Tires with or without rims accepted. No commercial generators permitted.



Household Hazardous Waste Collections

Date: Saturday, May 14 and
Saturday, September 10, 2011

Time: 9am – 2pm (rain or shine)

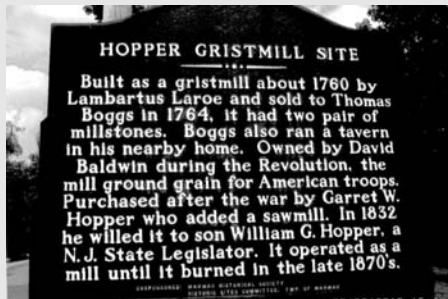
Location: Bergen County Campgaw Mountain Reservation
200 Campgaw Road,
Mahwah, NJ



FREE OF CHARGE FOR BERGEN COUNTY RESIDENTS – ID REQUIRED!!!

- Businesses must pre-register prior to attending BCUA sponsored collection events. A disposal fee will be charged and collected. Please call 201-807-8696 for additional information.
- Do you have questions about the BCUA’s Household Hazardous Waste Management and Disposal Program? Call the BCUA Environmental Programs Hotline: 201-807-5825, or visit them online at www.bcuu.org

MAHWAH HISTORIC PRESERVATION COMMISSION AS YOU PASS BY



You have probably seen them as you drive by on your way somewhere, and they spark your interest, but you don’t have the time to stop and read them. You might make a mental note to read it the next time you pass by. What are “they”? They are the large blue metal Historical Site Markers that have been placed over the past 40

years by various organizations and historical groups in Mahwah. For example, there are markers at the Old Lutheran Cemetery (earliest stone is dated 1745) on Moffatt Road; the Ramapo Reformed Church, (1798) at the corner of Island Road and W. Ramapo Avenue; the Old Station Museum (1871) across from Winters Pond; the Hopper Gristmill (1764) on Ramapo Valley Road, and by the Cleveland Bridge, (1888) at the southern end of Ramapo Valley Road.

There are 13 of these blue Historic Markers located throughout the Township. Each marker details a brief history of the site, and identifies the sponsor of the marker and the date it was placed. These markers are a reminder of who lived here before us, what they did, and gives us a sense of how we have changed and grown into the Township we are today. Yes, we all lead busy lives, but if you do manage to find the time to stop and read these reminders of our history, you will be glad you did!

For more information on the Township’s Historical Site Markers, email barbshanley@gmail.com or dstorms@mahwahtwp.org.

MAHWAH SENIOR ACTIVITY CENTER

*Hours of operation: Monday – Friday
8:00am to 4:00pm*

The Senior Center’s mission is to provide programs that meet the individual needs of seniors, promote personal growth, and socialization and foster feelings of achievement, companionship and well-being. It is an all-purpose facility that offers many programs and services for adults 62 years of age and over. Come discover what the Senior Center has to offer.

The Senior Center offers all free activities. Drop in and enjoy free billiards, card games, dominos and Mah Jong.

Or, just come sit down and enjoy a cup of coffee and meet someone new.

Daily activities are: Jazzercise, Aerobics, Pilates, Line Dancing, Tai Chi Chih, Chair Yoga, Yoga, Meditation, Body Toning, Woodcarving, Art, Watercolor and Acrylics.

Additional programs: Movie Day, Luncheons, Special Events

Upcoming Trips:

The Philadelphia Flower Show, Dinner Theater, Broadway and educational trips.

MAHWAH MUSEUM - HAPPENINGS APRIL 2011

The Mahwah Museum will open a spectacular exhibit in September 2011 on the life of the legendary musician and inventor Les Paul. This unusual and creative man lived in Mahwah from 1952 until his death in 2009. From his home in the Deerhaven section of the Township, he produced and broadcasted his famous television show. He also recorded his music here, cut records, and sent them to New York City to be produced and distributed by his record company.



Les Paul and Mahwah Museum Trustee Jane DeWan

Les visited the Mahwah Museum on various occasions and was supportive of and excited about its plans to have this exhibit. He donated to the Museum some of his artifacts, which will be featured in our exhibit. His home is a virtual museum and the exhibit will include many of his important and unusual artifacts which the museum is privileged to have on loan. He kept everything he used to make his various recording devices and things he used to, as he put it 'tinker' with his guitars to change and improve the sound. In his last years he set up a computer lab and studio



Les Paul's Home

Photo Credit: Les Paul Archives

exhibit will tell this story as it has not been told before. Rare and unique items, which have never been exhibited anywhere before will be on display. The centerpiece of this exhibit, in addition to his reconstructed studio, will be a dozen unusual and valuable guitars. These precious and priceless items will be on display together for the first time.



over his garage as he was constantly reinventing himself using new technology as it came along. The

In addition to this exhibit plans are under way to host a week-long series of seminars, lectures, and a concert at Ramapo College. The museum and the music faculty of Ramapo College will host this. Among the names under consideration for the concert are Bucky Pizzarelli, and the Les Paul Trio led by Lou Pallo. The idea is that this will be the first of an annual celebration of the life and work of Les Paul.

The museum has the support and cooperation of Ramapo College, the Les Paul Foundation and the GRAMMY Museum in this endeavor. Contributions are being accepted by the museum for this effort. Any resident who has information on Les Paul and his life is invited to contact a member of the committee composed of Jane DeWan, Tetsu Amagasu, or Charlie Carreras at (201) 512-0099

On April 14th the Museum's Monthly Lecture Series will present *Mahwah and Mount Laurel: the Growth of Housing in Mahwah 1900-2000*. In 1983, the Supreme Court of New Jersey rendered the controversial "Mount Laurel" decision about municipal requirements for affordable housing. Mahwah was one of the defendants in that case. The decision and its aftermath caused Mahwah to grow from a suburban community to the "Edge City" that it is today. Tom Dunn, the chronicler of Cragmere and a longtime resident of Mahwah, will present the history of housing development in the Township using sources from the archives of the Museum. Finishing off the season as we head into the summer months, the presenter on May 12th will be Kevin Woyce, author/historian who will discuss *"The History of the New Jersey Shore"*. These Lectures are held at 7:30 PM at the Ramapo Reformed Church on Island Road.

A new exhibit opened recently - *Mahwah Emergency Services* – features activities and archives of Mahwah's five Fire Departments and two Ambulance Corps. This exhibit will run through June 12th.

The recently expanded HO size Donald Cooper model train layout features a carnival, cityscapes, mountainous terrain, the Great Falls of Paterson, two subway lines, a four-track run-through passenger terminal that is based on Newark, New Jersey's Pennsylvania Station track plan, a freight bypass around the passenger terminal, some very intricate railroad junctions, and Thomas, the tank engine, on his own special track. The Mahwah Museum, located at 201 Franklin Turnpike is open on Saturdays and Sundays from 2 PM to 4 PM .

Right after Memorial Day, the Old Station Museum and Erie Caboose will open for the summer. New displays of railroad memorabilia have been added in the Old Station Museum and visitors to the Caboose can now experience

Continued on page 7

Photo credit: Marion Brown



Here comes Thomas

what it was like for the train crews who spent much of their time in the caboose. Based on the original plans for the caboose, which are also on display, the living space includes a sleeping bunk, desk and fold down seat, fold down table,

locker and cupola seat. The Erie Caboose and the Old Train Station are open to the public on Sundays from 2 pm to 4 pm through October 23, 2011.

Photo credit: Marion Brown



Donald Cooper Railroad

Information and pictures of any aspect of Mahwah's history are always welcome as are volunteers to further the work of the museum. For additional information please visit our website www.mahwahmuseum.org or call 201-512-0099. ■

MAHWAH RECREATION DEPARTMENT

For detailed information on all events, visit our website, www.mahwahtwp.org

Go to Departments...Recreation

Meet the Bunny at Continental Soldiers Park
Saturday, April 16th at 1pm



"Meet the Bunny".

22nd Annual Fishing Contest at Silver Creek Pond
Saturday, May 28th at 10am



Volunteer from Trout Unlimited assists Council President John DaPuzzo with "first catch of the day".



Wow! Almost 15 Inches....

Youth Sports Parade
Saturday, May 7th at 9:30am



National Anthem Being Sung

Memorial Day Parade
Monday, May 30th at 10am



PFC Richard Cronenberg, now serving in Kandahar, Afghanistan and Vic Bartoloma of Mahwah Fire Department paying tribute at our Memorial Day Ceremony.

Coming this Summer

Paddle Days at Continental Soldiers Park
Tuesday evenings in July, from 5:30- 8pm

Senior Picnic at Continental Soldier's Park
Thursday, July 14th at 12pm

Save the Date!

17th Annual Mahwah Day
Saturday, September 24, 2011

Join Mahwah Receptions e-mail list to receive notices of all upcoming events. Simply send an e-mail to mahwahrec@gmail.com and say, "sign me up".

Adult Sports: Registration for Adult Residential Softball and Mahwah's Coed Adult Soccer League will begin in May. Check out our website for registration dates and times.

Summer Recreation Click on the yellow arrow on the Recreation Departments home page for complete information on our Summer Recreation program. ■

MAHWAH CERT SEEKS VOLUNTEERS

Free Training and Rewarding Service to the Community

Mahwah Community Emergency Response Team (CERT) is made up of volunteer residents who are trained to support professional first responders (police, fire, EMTs, et al) in all types of emergency situations while serving the community in other ways during non-emergency times.

CERT is part of a national program administered under FEMA and is organized locally under the auspices of the Mahwah Office of Emergency Management.

Below are some highlights of CERT activities during the past few months:

Shelter Deployment – Winter Storm December 2010



During the severe snow storm of December 26 Mahwah CERT was again called into action to set up and run an emergency shelter. Power outages and treacherous conditions on Interstate 287 and other roadways

prompted authorities to request that CERT set up and staff a shelter in the Municipal Complex. Many of CERT's members are certified for Shelter Management by American Red Cross.

Fourteen Mahwah Residents Graduate CERT Course



Graduates of the Fall 2010 CERT Program with Mahwah CERT members (back row) at the Bergen County Law and Public Safety Institute.

More and more residents are seeing the benefit of attending the CERT course.

During the most recent offering fourteen Mahwah residents completed the free eight-week course which provided basic skills and information on what to do before, during and after a disaster to aid themselves, their family and their community.

Mahwah Day Duties

Mahwah CERT was a key organization during the annual Mahwah Day festivities, helping to ensure pedestrian safety and traffic control at crosswalks, along the parade route, and in parking areas. In addition, members distributed safe-



CERT Operations HQ / Info Booth Mahwah Day 2010



Two of CERT's traffic and pedestrian safety teams on Mahwah Day 2010

ty and preparedness information at the CERT info booth and signed up residents for free CERT training which is generally offered twice a year. Twenty four CERT members served in these capacities during Mahwah Day 2010.

Dental Care Clinic / Public Safety Expo

Due to Mahwah CERT's proven abilities, it is sometimes called upon to serve the wider community. In November, CERT contributed organizational resources to the regional Free Dental Clinic and Blood Drive in Glen Rock. CERT was also on hand to help inform visitors to the annual Public Safety Expo in Mahwah in October.

For more information about Mahwah CERT, go to www.mahwahcert.org or contact CERT Coordinator Allan Becker at (201) 960-9132 or mahwahcert@optonline.net.

What is MRSA?

MRSA stands for Methicillin-resistant Staphylococcus aureus. Methicillin is an antibiotic and Staphylococcus aureus is the bacterium that is resistant to it. MRSA has been around since the 1960's in hospitals and long-term care facilities. It has been tracked by the CDC since 2004 in community settings. 25% of people have the bacteria on their skin and/or nasal passages. MRSA causes skin infections that appear as pustules, turf burn, spider bites or boils that are red, swollen, painful, or have pus or other drainage. These infections often occur at sites of visible skin trauma (cuts, scrapes). They also occur where there is hair (head, back of neck, groin, armpit, beard area of men).

MRSA can be treated by healthcare professionals. They may drain the pus if present and apply a clean dry bandage to the area. Treatment may or may not include treatment with antibiotics. If antibiotics are prescribed it is important to take the full course even if symptoms disappear. Serious infections such as pneumonia, bloodstream infections or bone infections are rare in otherwise healthy people who get the skin infection.

MRSA is transmitted through skin-to-skin contact and/or contact with shared items or surfaces that have come into contact with a person's infection (towels, countertops, bedding, gym or sports equipment, bar soap, doorknobs, tabletops).

Protecting yourself from MRSA is fairly simple. It starts with practicing good hygiene and keeping hands clean by washing with soap and

water or using an alcohol-based hand sanitizer. It is also a good idea to shower immediately after exercise. If you have open cuts or scrapes, it is important to cover them with clean dry bandages. If you are already infected with MRSA, it is important to keep the affected areas covered with bandages and clothing if possible.

No special soap needs to be used for hand washing. The important part is the actual hand washing. There is no need for special laundry soap either. Washing clothing and linens in hot water and drying in a hot air dryer will kill the bacteria. Any EPA approved product can be used to clean surfaces. Please follow the directions carefully.

Here are the quick facts about MRSA:

- MRSA is treatable but can become serious if left untreated
- See a health care professional if you have an open wound that is infected.
- Don't share personal care items like towels, razors or brushes.
- Wash your hands frequently throughout the day.
- Keep all open wounds covered with a clean dry bandage and wear clothing that covers the area.

If you want to find out more about MRSA, the following websites have accurate information on them.

- <http://www.cdc.gov/mrsa/index.htm>
- http://www.medicinenet.com/mrsa_infection/article.htm

A MESSAGE FROM MAHWAH FIRE PREVENTION: THINK SAFETY IN THE KITCHEN



Everyone enjoys cooking. Okay, maybe not everyone, but it is safe to say that everyone enjoys eating. Food brings families and friends together for many festive occasions. There are countless organizations that conduct their meetings during luncheons and dinners. For those of you who enjoy cooking or have to cook, here is some food for thought.

Simply because someone forgot a meal cooking on the stove, people were needlessly burned and thousands of dollars of damage was done to property.

There are a few simple things we can do to make cooking a safe and enjoyable event:

- Never let children play in the kitchen while food is cooking.
- Clean grease, oil and food from all of your appliances.
- While cooking, keep all pot handles turned in so they won't be

knocked off of the stove.

- Wear tight fitting clothes. Loose sleeves can catch fire if they get near hot burners.
- Don't store combustible items on or over your stove. They can easily catch fire and you can get burned by reaching over hot burners.
- Heat all cooking oils slowly.
- If a pan containing grease or food catches fire, cover the pan with a lid and turn off the heat. If a fire starts in your oven or microwave, close the door and turn off the heat. Never open a microwave or oven door if a fire starts. It will only worsen the fire by giving it fresh oxygen.
- If a fire happens in your kitchen, no matter how large or small you think it is, call the fire department. Better safe than sorry!
- And please, don't go away from home and leave your stove turned on. If you do, you may come home to find unexpected guests with big red trucks! ■

SPRING NEWS OEM

The Mahwah Office of Emergency Management (OEM) would like to remind its residents to be ready should disaster strike. OEM would like to stress that residents should not just prepare for disasters as large storms could cause just as many problems. It is good to be ready for any situation. Here are some helpful hints on how to prepare an emergency kit.

- Water, one gallon of water per person per day for at least three days, for drinking and sanitation
- Food, at least a three-day supply of non-perishable food
- Battery-powered or hand crank radio and a NOAA Weather Radio with tone alert and extra batteries for both
- Flashlight and extra batteries
- First aid kit
- Whistle to signal for help
- Dust mask, to help filter contaminated air and plastic sheeting and duct tape to shelter-in-place
- Moist towelettes, garbage bags and plastic ties for personal sanitation
- Wrench or pliers to turn off utilities
- Manual Can opener for food (if kit contains canned food)
- Local maps
- Cell phone with chargers, inverter or solar charger

Additional Items to Consider Adding to an Emergency Supply Kit:

- Prescription medications (week's supply) and a written list of medications with prescription numbers and glasses
- Infant formula and diapers
- Pet food and extra water for your pet
- Important family documents such as copies of insurance policies, identification and bank account records and an address book with family contacts in a waterproof, portable container
- Cash and change
- Sleeping bag or warm blanket for each person.
- Complete change of clothing including a long sleeved shirt, long pants and sturdy shoes
- Household chlorine bleach and medicine dropper – When diluted nine parts water to one part bleach, bleach can be used as a disinfectant
- Fire Extinguisher
- Matches in a waterproof container
- Feminine supplies and personal hygiene items
- Mess kits, paper cups, plates and plastic utensils, paper towels
- Paper and pencil
- Books, games, puzzles or other activities for children

Additional information and suggestions can be found by visiting the www.state.nj.us/njoem/plan, www.ready.gov, www.fema.com. ■

The Township of Mahwah working with Sustainable Mahwah will be offering its residents another opportunity to shred and recycle their personal documents/files during the next two community paper shredding days. This service is for Township Residents Only – No Businesses. In an effort to accommodate all those wishing to participate, please limit your documents to 4 bags/boxes weighing no more than 10 lbs. each.

Date: Saturday, April 16, 2011
Saturday, October 1, 2011

Time: 9am – 1pm

Location: Township of Mahwah Municipal Building Upper Level Parking Lot

Please note that the event will end prior to 1pm if the shredding truck reaches capacity and the event may be cancelled due to extreme bad weather.



THE MAHWAH FIRE DEPARTMENT IS SEEKING NEW MEMBERS



The Fire Department is comprised of Men and Women who serve among our 5 Fire Companies. It is also fortunate to have a Junior Firefighters program comprised of high school students eager to serve their community. The Fire Department is 100% volunteer and takes pride in its commitment, honor and professionalism. In today's society it is hard to recruit people to join the ranks. People's lives are busy and crowded with many commitments and obligations. Choosing to serve as a volunteer firefighter gives people the opportunity to serve along some of the finest citizens that Mahwah has to offer. Its ranks include Veterans from WWII through Operation Enduring Freedom. The member's backgrounds range across every spectrum of careers from CEO's to Teachers, Contractors, Business Owners, and even home-

makers. When you join a volunteer fire department you not only fight fires and save lives, you learn skills that no other volunteer service can teach you. You become part of an extended family that will be by your side no matter where life takes you. The Fire Department pays for the required training at the Bergen County Fire Academy, and provides you with the required equipment. The 5 fire companies train one night per week and hold one meeting per month.

If the Mahwah Fire Department sounds like something that would interest you, please stop by your closest fire house on any Wednesday night after 7pm. The members would be glad to talk to you and answer any questions you may have, or you can email at JoinMahwahFire@gmail.com ■



2010 Mahwah Fire Department



2011 Mahwah Fire Department Chiefs
Left to right: 2nd Asst. Chief Brad Stio, Chief Brian Potter, 1st Asst. Chief Ed Garza

COMPANY 1 AMBULANCE WELCOMES FOUR NEW EMTS

Liz Villano, Captain of Mahwah Ambulance and Rescue Squad, Co. #1 is proud to announce that John Cluzel, Brianna Grath, William Grath and Brenda Olesin successfully completed the Emergency Medical Technician (EMT) program at the Bergen County Law and Public Safety Institute. Captain Villano reports, "we just learned that all four have passed their final exam and are now Probationary/EMT Members. They will ride with other seasoned squad members in an effort to enhance their newly developed skills."

Mahwah Ambulance provides all training for its new members. The EMT course is currently 120 hours and is given in the Fall, Spring and Summer semesters at Public Safety Institute located in Mahwah as well as the Bergen County EMS Training Center in Paramus. Both daytime and evening classes are offered. Company #1 Ambulance is proud of the accomplishments of its four newest EMTs.

Mahwah Ambulance & Rescue Squad, Co. #1 provides emergency medical services to the residents, businesses and visitors of Mahwah. Co. #1 Ambulance answered 954 calls in the year 2010. All of the members of Co. #1 Ambulance are volunteers. The squad is always looking for new members, both EMTs and Drivers. Previous experience is not needed.

If you are 16 years of age or older, and you would like more information on how to become a member, you can call 201-252-8282 or email us at JoinMahwahEMS@gmail.com. ■



Seated left to right – William Grath, Brianna Grath, John Cluzel, Brenda Olesin
Middle Row – Mahwah Co. 1 Ambulance Officers – left to right – Captain Liz Villano, Assistant Captain Gregory Antonetti, 1st Lieutenant JoAnn Rean, 2nd Lieutenant Doreen Strauch.
Back Row – left to right – Robert English and Charlie Croker

Photo Credit – Billy Olesin



MAHWAH POLICE DEPARTMENT UPDATING OUR STRATEGIC PLAN:



Planning for the Future

1. Tell us about yourself?

2. Your contacts with the Mahwah Police Department -We would like to know how you have had contact with us during the past year. Check off all that apply.

1. In the past year, I have been in contact with the Mahwah Police Department as:

- | | | |
|--|--|---|
| <input type="checkbox"/> A witness to a crime | <input type="checkbox"/> Requested a police record | <input type="checkbox"/> Wanted to complain about an employee's conduct |
| <input type="checkbox"/> A victim of a crime | <input type="checkbox"/> Was stopped by a Police Officer for a traffic violation | <input type="checkbox"/> Had a question |
| <input type="checkbox"/> Reported a crime or suspicious incident | <input type="checkbox"/> Attended a Community Event sponsored by the Police Department | <input type="checkbox"/> Spoke with a police employee |
| <input type="checkbox"/> Involved in a motor accident | <input type="checkbox"/> Attended a Community Event sponsored by the Mahwah Municipal Alliance | <input type="checkbox"/> Was arrested by a Police officer |
| <input type="checkbox"/> Called with an Animal complaint | | <input type="checkbox"/> Other contact (Specify: _____) |
| <input type="checkbox"/> Requested another police service | | _____ |

3. Your most recent contact with the Mahwah Police Department

The Mahwah Police Department is interested in improving the quality of service we provide to the Community, as well as developing our personnel

We are striving for high quality service while maintaining excellent community relations. You have every right to expect the very best from us.

- ❖ If we **DID IT RIGHT**, we would like to know
- ❖ If we **DID NOT**, we need to know

Answer the following questions based on your LAST contact with us:

1. Was the Records Clerk/Dispatcher you first spoke to courteous/helpful?						
	Poor		Average		Great	N/A
My Choice	<input type="checkbox"/>	<input type="checkbox"/>	<input type="checkbox"/>	<input type="checkbox"/>	<input type="checkbox"/>	<input type="checkbox"/>
Comments:						

2. How well did the Police officer (or other police employee you dealt with) treat you?						
	Poor		Average		Great	N/A
My Choice	<input type="checkbox"/>	<input type="checkbox"/>	<input type="checkbox"/>	<input type="checkbox"/>	<input type="checkbox"/>	<input type="checkbox"/>
Comments:						

3. How well did the Officer/other police employee explain what actions he/she was taking during contact with you? Or actions to be taken after his/her contact with you?						
	Poor		Average		Great	N/A
My Choice	<input type="checkbox"/>	<input type="checkbox"/>	<input type="checkbox"/>	<input type="checkbox"/>	<input type="checkbox"/>	<input type="checkbox"/>
Comments:						

4. How would you rate the Mahwah Police Department overall?						
	Poor		Average		Great	N/A
My Choice	<input type="checkbox"/>	<input type="checkbox"/>	<input type="checkbox"/>	<input type="checkbox"/>	<input type="checkbox"/>	<input type="checkbox"/>
Comments:						

4. What is the Quality of our work?

For each question, indicate the level that best represents your opinion.

1. How do you rate the quality of each of the following Mahwah Police services?

	Poor	Fair	Good	Very Good	Excellent	Don't Know
Visibility of the Police on Patrol	<input type="checkbox"/>	<input type="checkbox"/>	<input type="checkbox"/>	<input type="checkbox"/>	<input type="checkbox"/>	<input type="checkbox"/>



Township of Mahwah

475 Corporate Drive
Mahwah, NJ 07430

PSRT STD
ECRWSS
U.S. Postage
PAID
Permit No. 340
Allendale, NJ 07401

POSTAL CUSTOMER
MAHWAH, NJ 07430

Follow up on crime	<input type="checkbox"/>	<input type="checkbox"/>	<input type="checkbox"/>	<input type="checkbox"/>	<input type="checkbox"/>	<input type="checkbox"/>
Ability to interact with the public	<input type="checkbox"/>	<input type="checkbox"/>	<input type="checkbox"/>	<input type="checkbox"/>	<input type="checkbox"/>	<input type="checkbox"/>
Crime Prevention programs and services	<input type="checkbox"/>	<input type="checkbox"/>	<input type="checkbox"/>	<input type="checkbox"/>	<input type="checkbox"/>	<input type="checkbox"/>
Services to the Schools and Youth	<input type="checkbox"/>	<input type="checkbox"/>	<input type="checkbox"/>	<input type="checkbox"/>	<input type="checkbox"/>	<input type="checkbox"/>
Ability to Investigate crimes or incidents	<input type="checkbox"/>	<input type="checkbox"/>	<input type="checkbox"/>	<input type="checkbox"/>	<input type="checkbox"/>	<input type="checkbox"/>
Response time to calls for service	<input type="checkbox"/>	<input type="checkbox"/>	<input type="checkbox"/>	<input type="checkbox"/>	<input type="checkbox"/>	<input type="checkbox"/>

2. What does the Future hold for us? These responses will be critical in our preparation of a Strategic Plan that will guide the Mahwah Police Department in the coming years. Your input in these areas is very important to us.

1. What three things do you like most about living in Mahwah?

1	2	3
---	---	---

2. What three things do you like least about living in Mahwah?

1	2	3
---	---	---

3. What do you think will be the three biggest problems that Mahwah will face within the next five years?

1	2	3
---	---	---

4. What three police services do you think the Mahwah Police Department does the best job of providing its residents?

1	2	3
---	---	---

5. What three police services do you think the Mahwah Police Department needs to improve?

1	2	3
---	---	---

6. Are there any specific police services or programs you would like to see the Mahwah Police Department adopt (or if it is an existing service, you would like to see expanded upon)?

1	2	3
---	---	---

You are all done! Thank you so much for taking the time to provide us with this information. It will be used to plan for our future. The survey can be dropped off at the Mahwah Police Department, or mailed to the Mahwah Police Department, 221 Franklin Tpke. Mahwah, New Jersey 07430



Printed on 100% Recycled paper.