



Mahwah MATTERS

Spring 2015 Newsletter

What's Inside...

..... **2**

Mayor's Letter

..... **3**

Stormwater Pollution

..... **4**

Watering Schedule

..... **5**

Health Department

..... **6/7**

Mahwah Museum

Public Library

..... **8**

Internet Safety

..... **9**

Mahwah CERT

..... **10**

Recreation Events

..... **11**

Spring Clean Up

..... **12**

Recycling Schedule

MAHWAH SURVIVES WINTER OF 2015



The Township thanks the hard working men and women of the Department of Public Works for keeping our roads open and safe during the never ending Winter of 2015. With record breaking low temperatures and snowfalls, the Department was out day and night for over 20 snow and ice events. The Department used over 4,000 tons of salt and grit materials at a cost of \$200,000 with over \$150,000 of overtime. The Utilities Department repaired emergency water main breaks and the roads were cleared for emergency service vehicles and school buses.

The staff is looking forward to routine spring and summer services on the roads and at the pool, parks and playgrounds. ■

SUMMER 2015 FAMILY EVENTS AT THE MAHWAH POOL



See what new things are happening at the Mahwah Pool! This summer the Mahwah Pool will be a fun place to bring the family to enjoy the new activities and events offered. You might choose to come alone for a workout or to just relax and unwind. Either way, we think you'll enjoy it.

Mahwah Pool continued on page 3



A MESSAGE FROM MAYOR BILL LAFORET

The Township has made it through what has proven to be one of the worst winters ever: complicated snow storms, ice covered roads, constant subzero temperatures and blizzard winds.

We appreciate the diligence of our Department of Public Works working day and night to keep the roads clear and our Mahwah Police Department for keeping the pedestrians and vehicle traffic safe; and let's not forget the Water and Sewer Department who repaired several broken water mains during this arctic blast that we just went through. Several significant structure fires tested the best of our Fire Department, MEMS ambulance, Office of Emergency Management and CERT Teams. These agencies responded as a team and the results speak for themselves.

I do believe that we are ALL READY FOR SPRING! The Winters Park Committee has done a wonderful job renovating Winters Park, and the Municipal Pool is getting ready to open with new activities and family events, and this year the pool is heated.

We are very excited to welcome new faces on our Township Council, Councilwomen Mary Amoroso, Janet Ariemma and Councilman Jonathan Wong, and look forward to a wonderful Summer.

Respectfully,

Mayor William C. Laforet



Pothole season is upon us. You can help us by reporting potholes, road maintenance and other community issues by using the Mahwah Delivers App on your smart phone or home computer.

Visit www.publicstuff.com/nj/mahwah.

New Employees . . .

A new Construction Code Official has been appointed to the Department of Inspections. **Daniel Mairella** has spent the last decade and a half in Mahwah as Building Inspector.

Dan built a strong background in construction inspections as Building Inspector for the City of Clifton. Mahwah was growing and the type of construction taking place was a good fit allowing Dan an opportunity to join the Township of Mahwah. Dan has earned a degree in Applied Science with a specialty in Administration of the New Jersey Uniform Construction Code from Essex County College. He holds Department of Community Affairs licenses as

Construction Official, Building Inspector, Fire Inspector, and is a Certified Instructor for the Department of Community Affairs.

The Township welcomes **Robert (Jay) Esposito** as the new Pool Manager of the Mahwah Municipal Pool. Jay has been involved in various positions of the municipal pool business for well over 20 years.

Jay served as the Director of Pool for Woodcliff Lake for over 18 years. During that time he was instrumental in the concept and design of their new 1.5 million dollar Old Mill Pool Complex. Jay is also a member of the North Jersey Pool Managers Association.

2015 Pool Season - New Events:

Pool Events are open to both Pool Members and Mahwah Resident Non Pool Members (pay at the door)

- Early Morning Lap Swim - Mondays, Wednesdays and Fridays (6 a.m.- 9 a.m.)
- Water Fitness Classes - Tuesdays and Thursdays (7 p.m. - 8 p.m.)
- Saturday Morning Swim Lessons
- DJ - Sundays
- Raft Night
- BBQ - July 4th
- Family Camp Out - Saturday, July 11
- Beefsteak Dinner - Saturday, July 18
- Swim and a Movie - Saturday, July 25
- Family Night Party and Swim - Saturday, August 1 and August 29
- Volleyball and Corn Hole Tournaments throughout the season
- Kids Arts and Crafts Programs - Sundays
- Birthday Party Packages

Pool Hours:

Opening Day - Memorial Day Weekend: Saturday, May 23; Sunday, May 24; and Monday, May 25 (12 p.m. - 7 p.m.)

Pre-Season Hours: Weekends Only (12 p.m. - 5 p.m.)
Wednesday, June 17; Thursday June 18; and Friday, June 19 (4 p.m. - 7 p.m.)

Full Time Hours: Saturday, June 20 through Labor Day, Monday, September 7 (12 p.m. - 8 p.m.)

Now hiring: Lifeguards, Gate Attendants and Concession Attendants. Please email Jay Esposito, Pool Director at jesposito@mahwahtwp.org

Lifeguard and WSI training classes: For more information please contact Jay Esposito at jesposito@mahwahtwp.org.
Twitter@Mahwah Pool or Like us on Facebook Mahwah Municipal Pool.

SOLUTIONS TO STORMWATER POLLUTION

Easy Things You Can Do Every Day To Protect Our Water

Pollution on streets, parking lots and lawns is washed by rain into storm drains, then directly to our drinking water supplies and the ocean and lakes our children play in. Fertilizer, oil, pesticides, detergents, pet waste, grass clippings; You name it and it ends up in our water.

Stormwater pollution is one of New Jersey's greatest threats to clean and plentiful water, and that's why we're all doing something about it.

By sharing the responsibility and making small, easy changes in our daily lives, we can keep common pollutants out of stormwater. It all adds up to a cleaner water, and it saves the high costs of cleaning up once it's dirty.

As part of New Jersey's initiative to keep our water clean and plentiful and to meet federal requirements, many municipalities and other public agencies including colleges and military bases must adopt ordinances or other rules prohibiting various activities that contribute to stormwater pollution. Breaking these rules can result in fines and other penalties.

As a resident, business, or other member of the New Jersey community, it is important to know these easy things you can do every day to help protect our water.

Limit your use of fertilizers and pesticides

- Hazardous products include some household or commercial cleaning products, lawn and garden care products, motor oil, antifreeze, and paints.
- Do not pour any hazardous products down a storm drain because storm drains are usually connected to local waterbodies and the water is not treated.
- If you have hazardous products in your home or workplace, make sure you store or dispose of them properly. Read the label for guidance.
- Use natural or less toxic alternatives when possible.
- Recycle used motor oil.
- Contact your municipality, county or facility management office for the locations of hazardous waste disposal facilities.

Keep pollution out of storm drains

Municipalities and many other public agencies are required to mark certain storm drain inlets with messages reminding people that storm drains are connected to local waterbodies

Do not let sewage or other wastes flow into a stormwater system.

Clean up after your pet

Many municipalities and other public agencies must enact and enforce local pet waste rules.

An example is requiring pet owners or their keepers to pick up and properly dispose of pet waste dropped on public or private property.

Make sure you know your town's or agency's requirements and comply with them. It's the law. And remember to:

Use newspapers, bags or pooper-scoopers to pick up waste.

Dispose of wrapped pet waste in the trash or unwrapped in a toilet.

Never discard pet waste in a storm drain.

Don't feed wildlife

Do not feed wildlife, such as ducks and geese, in public areas.

Many municipalities and other public agencies must enact and enforce a rule that prohibits wildlife feeding in these areas.

Don't Litter

Place litter in trash receptacles.

Recycle. Recycle. Recycle.

Participate in community cleanups.

Dispose of yard waste properly

Keep leaves and grass out of storm drains.

If your municipality or agency has yard waste collection rules, follow them.

Use leaves and grass clipping as a resource for compost.

Use a mulching mower that recycles grass clippings into the lawn.

Contact Information

For more information on stormwater related topics, visit www.njstormwater.org or www.nonpointsource.org

Additional information is also available at U.S. Environmental Protection Agency Web sites www.epa.gov/npdes/stormwater or www.epa.gov/nps

New Jersey Department of Environmental Protection
Division of Water Quality

Bureau of Nonpoint Pollution Control

Municipal Stormwater Regulations Program

609-633-7021 • www.cleanwaternj.org ■

FAQs ON HISTORIC PRESERVATION WEBSITE

The Historic Preservation Commission has compiled answers to Frequently Asked Questions (FAQs) regarding historic homes and structures in Mahwah, which includes information on how to research the history of your home, as well as how to have it added to the Township Preservation Ordinance if you wish to have it protected. To access this information, please go to www.mahwahtwp.org; click on Boards, Commissions & Committees; click on Historic Preservation Commission; click on FAQs. If you have a question that is not addressed in the FAQs, please send your question in an email to: dstorms@mahwahtwp.org.

UPDATES FROM THE MUNICIPAL CLERK'S OFFICE

2015 Dog and Cat Licensing

In accordance with the Township Code, Dogs and Cats over 7 months of age are required to be licensed.

A Rabies Vaccination Certificate, valid through and including November 1, 2015, is required. If applicable, written proof of spaying or neutering from a licensed Veterinarian is required. If the Dog or Cat has previously been licensed and the Municipal Clerk's Office records reflect same, proof of spaying/neutering and rabies vaccination are not required.

Fees for Dog and Cat Licenses:

\$7.00 Spayed/Neutered Dog and/or Cat
\$10.00 Unspayed/Unneutered Dog and/or Cat

After February 15, 2015, the \$10.00 late fee per animal is imposed which is in addition to the licensing fee.

Licenses may be renewed in person between the hours of 8:30 a.m. and 3:30 p.m., Monday through Friday except Municipal holidays in the Municipal Clerk's Office. Or by mailing the Rabies Vaccination Certificate, Proof of Spaying/Neutering Certificate and a self-addressed stamped envelope to the Township of Mahwah, 475 Corporate Drive, Mahwah, New Jersey Attention: Municipal Clerk's Office. Please do not send cash. If licensing cats and dogs, separate checks are necessary.

ELECTION NEWS:

Upcoming Elections:

Primary Election Tuesday, June 2, 2015
General Election Tuesday, November 3, 2015

Note: The School and Municipal Elections have been moved to November and are held with the General Election.

Polls are open from 6:00 a.m. to 8:00 p.m.

Voter Registration Dates and Last Day for New Voters to Register to Vote in Upcoming Elections:

Primary Election Tuesday, May 12, 2015
General Election Tuesday, October 13, 2015
The Municipal Clerk's Office will be open from 8:00 a.m. to 9:00 p.m. for Voter Registration on the above dates. Deadline for new Voters to register to vote in an upcoming Election is on the above Voter Registration Dates by 9:00 p.m..

Absentee Ballots: Absentee Ballot Request Forms are available in the Municipal Clerk's Office. **Deadline:** Requests must be received by the Bergen County Clerk's Office in Hackensack is 7 days before the Election for which you are requesting the Absentee Ballot. Or you may apply in person to the Bergen County Clerk, 1 Bergen County Plaza – Room 130 in Hackensack up until 3:00 p.m. the day before the Election. ■



2015 WATERING DAYS

WATERING DAYS - BUSINESSES, CONDOS AND APARTMENTS

NO WATERING ON SUNDAYS

PROPERTIES WATERED WITH INGROUND SPRINKLER SYSTEMS ARE NOT PERMITTED TO ALSO BE WATERED WITH ABOVE GROUND HOSE FED SPRINKLERS
HAND HELD HOSES ARE PERMITTED ANY TIME

MONDAY – WEDNESDAY – FRIDAY

APPLE RIDGE CONDOS; RAMAPO BRAE LANE; BELLGROVE DRIVE (INDIAN FIELD); RAMAPO COLLEGE (BALLFIELD SIDE); BIRCHWOOD HILLS; RAMAPO RIDGE CONDOS; CHAPEL GREEN; RIDGE GARDENS; CORPORATE DRIVE (NORTHSIDE); RIO VISTA ASSOC. (SEMINARY ROAD); DARLINGTON RIDGE (ZONE A); RIO VISTA CONDOS; FRANKLIN HEIGHTS; RIO VISTA POOL; GREENWAY ON THE RIDGE; ROUTE 17 SOUTHBOUND; INDIAN HOLLOW; SHARP ELECTRONICS; MACARTHUR BLVD (EASTBOUND); STARVIEW APARTMENTS; MAHWAH HIGH SCHOOL; THE MALL APARTMENTS

TUESDAY – THURSDAY – SATURDAY

BROOKSIDE MANOR; LINDVALE GARDEN APARTMENTS; CORPORATE DRIVE (SOUTHSIDE); MACARTHUR BLVD (WESTBOUND); DARLINGTON RIDGE (ZONE B); NORTH BAYARD LANE; DATASCOPE; PADDINGTON SQUARE; DIAL AMERICA; POND MEADOWS; DICKINSON LANE; RAMAPO COLLEGE (SCHOOL SIDE); FRANKLIN CROSSING; RAMAPO GARDEN APTS (ABOVE GROUND); HYTORC; ROLLING HILLS APARTMENTS; INDIAN FIELD; ROUTE 17 NORTHBOUND; INDIAN RIDGE; SOCIETY HILL I & II; INTERNATIONAL CROSSROADS; UNITED PARCEL SERVICE

A REMINDER FROM THE TOWNSHIP OF MAHWAH WATER DEPARTMENT

From May 1 through September 30, 2015:

Outdoor watering is permitted all day at **EVEN** number street address properties on Mondays, Wednesdays and Fridays.

Outdoor watering is permitted all day at **ODD** number street address properties on Tuesdays, Thursdays and Saturdays.

OUTDOOR WATERING IS PROHIBITED ALL DAY ON SUNDAYS

The use of a hand held hose for watering is permitted on any day, including Sunday.



2015 COLLECTION EVENTS FOR BERGEN COUNTY RESIDENTS

Tire Recycling • Electronics & Computer • Mobile Paper Shredding



Bergen County Campgaw Mountain Reservation
200 Campgaw Rd., Mahwah



Saturday, June 6th
Saturday, October 24th



Collection Hours:

9 a.m. - 2 p.m. (RAIN OR SHINE)



Give your tires one last spin--recycle them!

- Four (4) tire limit per person, per delivery.
- Tires with or without rims accepted.

Recycle one "byte" at a time - bring us your electronics and computers!

- Bring us computers, televisions, modems, fax machines and more!

Give your paper a safe retirement--shred it!

- Recycle your unwanted, confidential documents by safely shredding them.
- Limit of four (4) bags/boxes weighing no more than 10 lbs. ea.
- Observe materials shredded on-site.

Safe and free collections for Bergen County residents. Proof of residency is required. No materials from businesses will be accepted.

Call the BCUA Environmental Programs

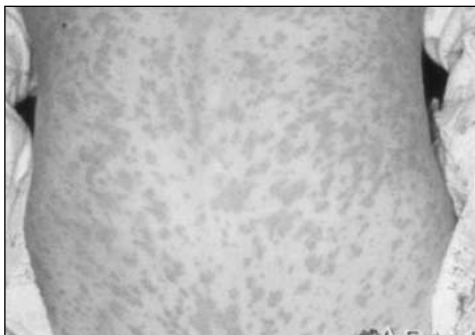
Hotline: 201-807-5825

or go to www.bcu.org for additional information.

Sponsored by the Bergen County Utilities Authority

HELP KEEP YOUR FAMILY SAFE FROM THE MEASLES OUTBREAK

By early February 2015, over one hundred twenty cases of measles had already been reported by fourteen states –most got their exposure at a single outbreak site. One of the major reasons people who were exposed caught the disease was because they were not vaccinated.



The symptoms (see picture) of measles generally appear about seven to 14 days after a person is infected. Measles typically begins with

- high fever
- cough
- runny nose
- red, watery eyes (conjunctivitis)

Measles is highly contagious. The virus can remain airborne and viable for up to two hours after a contagious person has breathed it into a room. Because Measles is still common in many parts of the world (including some countries in Europe and Asia) travelers continue to bring the disease into the United States. Measles spreads easily when it reaches a community where groups of people are unvaccinated.

“The Problem we are facing isn’t that the vaccine doesn’t work - it’s that the vaccine is not being used” stated Dr. Anne Schuchat, the Assistant U.S. Surgeon General. Dr. Schuchat is also the Director for the CDC’s National Center for Immunization and Respiratory Disease. The CDC recommends all children get two doses of MMR vaccine, starting with the first dose at 12 through 15 months of age, and the second dose at 4 through 6 years of age.

Measles can be serious in all age groups. However, children younger than 5 years of age and adults older than 20 years of age are more likely to suffer from life-threatening complications, including pneumonia and encephalitis.

Getting the measles vaccine is safe and highly recommended by doctors across our nation. It’s not just young children that need to be up to date on their vaccines. Reports show that adults get measles and spread it as well. There’s no evidence that shows harm if you receive more than one MMR vaccine, so if you have no record of receiving the vaccination discuss getting one now with your medical provider.

Content source:

National Center for Immunization and Respiratory Diseases, Division of Viral Diseases
<http://www.cdc.gov/ncird/>, www.health.ny.gov. ■

2015 Adult Health & Wellness Programs

Get your life back on track and learn to live a healthy lifestyle. The programs are **FREE** and led by a registered nurse.

Program includes:

- Blood pressure assessment
- Body mass index measurement
- Diabetes risk assessment
- Stress management
- Health Education
- Community resources



Second Tuesday Of Each Month

1:30 to 3:30 p.m.

Mahwah Senior Center

475 Corporate Drive, Mahwah, NJ 07430

Fourth Tuesday Of Each Month

2:00 to 4:00 p.m.

Norfolk Village Community Room

1201 Norfolk Road, Mahwah, NJ 07430

Fourth Tuesday – February, April, June, October and December

6:00 to 7:00 p.m.

Fardale Trinity Church

73 Chapel Road, Mahwah NJ 07430

MAHWAH BOARD OF HEALTH

Nursing services provided by:

Health Awareness Regional Program of HackensackUMC

551-996-2038



Health Department Update

Mahwah Health Department successfully vaccinated nearly 300 dogs and cats at their rabies clinic on January 17, 2015. This year Township animal licensing personnel were available on site for issuance of 2015 dog and cat licenses. Edie DeMaria VMD, Tycos Animal Control, and Township staff and volunteers all helped to make this a successful clinic!

AT THE MAHWAH MUSEUM IN 2015

The Mahwah Museum will introduce some exciting new items to the Les Paul and Neighborhoods exhibits. New exhibits are planned and we are looking forward to the celebration of Les Paul's 100th Birthday.

Les Paul's 100th Birthday

We are excited about our lineup for the Museum's Annual Gala: the Les Paul Tribute on June 14th. This year is special as we celebrate the 100th Birthday of Les Paul. We have confirmation from the legendary Bucky Pizzarelli and his son John Pizzarelli. In addition we have Lou Pallo and Les Paul's Trio, and Ed Laub.

Our Gala will be at the Vintage Lafayette Theater in Suffern New York. The Les Paul Foundation, headed by its President Michael Braunstein, has made our Gala an official event as part of the celebration of Les' 100th Birthday. The Foundation kicks off the celebration in New York City with a specially designed truck, which will exhibit many items from Les Paul's estate. That truck is scheduled to be at the Mahwah Museum from June 12-14. Rusty Paul is expected to be on hand to greet visitors at the Museum.



John Pizzarelli

Les Paul Exhibit

The Museum's permanent Les Paul Exhibit has been expanded to include the original Ampex "reel to reel" tape machine that Bing Crosby gave to Les, as well as some of Les Paul's other original recording equipment. The Ampex machine allowed Les to create the first multi-track tape recordings using the concept of "sound on sound." He and his wife, Mary Ford, used this equipment to record most of their top hits such as "How High the Moon,"

"Mockingbird Hill," and "Vaya Con Dios." Later, Les built the first 8 track recording machine, which is also on display in the Museum. New guitars from Les Paul's personal collection and other memorabilia have been added to the display. The popular "Play a Les Paul Guitar" feature continues by appointment. To play one of these guitars for a \$25 donation, call 201-512-0099 or info@mahwahmuseum.org.

New Display

"The California Job Case," equipment used in the printing of "The Ramsey Journal" beginning in 1892, is now on display at the Museum, as a coming attraction for the exhibit "The Dater Family and the Ramsey Journal," which will open in September. This display is made possible by the support of the Dater Family which published "The Ramsey Journal" since its start in 1892.

Student Exhibit

On April 4th, in a continuation of the "Artists in Mahwah" series,

the Museum will again feature artworks from students at Mahwah High School. About 25 pieces of various media will be displayed throughout the Museum. Mahwah can truly be proud of the accomplishments of its student artists.

Record and Memorabilia Sale

On April 26 we will hold a sale of records, photos and sheet music by such musicians as Bing Crosby, the Andrew Sisters and Nat King Cole. Check our website www.mahwahmuseum.org for more information.

Donald Cooper Model Railroad



Our Donald Cooper Model Railroad, a permanent part of the Mahwah Museum, is ever changing as new items are added. Please check our website for details on our programs and additions to our exhibits. If you are interested in model railroading we would welcome you as a member of our crew. The requirements are a love of the hobby, being twelve years of age or older, and becoming a paying member of the Mahwah Museum Society. If you have any questions, suggestions or would like to volunteer, contact info@mahwahmuseum.org or call 201-512-0099.

Lecture and Gallery Talk Schedule

Lectures: Held at the Ramapo Reformed Church, lectures begin at 7:30 p.m. Admission is \$3, members free. Refreshments are served.

- Thursday April 9 – 100 Years: The Mahwah Fire Department – a Panel presentation
- Thursday May 14 – Mahwah's Changing Railroad – by Bob Adler

Gallery Talks: Held at 1:15 p.m. at the Mahwah Museum, Gallery Talks are free with Museum admission.

- Sunday April 19 – Stagecoaches to One Cent Stamps – by Carol Greene
- Sunday May 17 – School Days, School Days – by Gail Doscher

History Day

Saturday, May 30th. As a member of the Northwest Bergen County History Coalition, The Mahwah Museum will participate in History Day. The theme this year is transportation, and the Museum will have some exciting displays at both the Museum, and the Old

Station Museum. Tickets can be purchased in advance and include entrance to 9 local historical houses and museums.

Old Station Museum and Caboose

The Old Station Museum and Caboose will open during the Township's annual Memorial Day Observance. The Old Station will then be opened every Sunday from 2-4 p.m. from June through September.



The Old Station Museum opened in 1967. The station was built in 1871 and was the original Erie station in Mahwah. Displayed inside are many railroad artifacts and photos related to the passenger trains of the Erie. We also have a diorama of the early Erie system. The restored center cupola Erie caboose, built in Clifton, New Jersey in 1929, and which ran on the Erie Line through Mahwah, was added in 1970. The caboose exhibit displays the daily operations of the crew, and includes a recreation of part of their living space. Admission for the Old Station is \$3 for non-members, members are free.

New Exhibits in September

In September, the Museum will open two new exhibits. *"The Dater Family and the Ramsey Journal"* will feature the history and remarkable accomplishments of this prominent family between 1800 and 1908. Of special interest to students, this exhibit will explain how a local newspaper was published in the 1890's. It will also present the *"Diary of Lavina Hopper Dater"* the wife of our State Senator, John Y. Dater, one of the founding fathers of Ramsey.

"Hohokus Township: 1849-1908" In 1849 Mahwah, Ramsey, Allendale, Waldwick, Ho-Ho-Kus Borough, and parts of Saddle River and Upper Saddle River were all part of a single township named Hohokus Township. Mahwah Township remained Hohokus Township until 1944 when its name was changed. This exhibit shows the evolution of Mahwah as we know today using maps, newspaper clippings from the Ramsey Journal, vintage photos, and other materials from the Museum archives and on loan from others.

The Museum is open on Wednesdays and Weekends from 1-4 p.m. from September through June, and includes the Donald Cooper Model Railroad. Admission is \$5 but members and children are free. For more information call 201-512-0099 or visit www.mahwahmuseum.org.

The Mahwah Museum receives operating support from the New Jersey Historical Commission in the Department of State. ■

Welcome to the Mahwah Public Library's new Teen Space!

The Library recently finished converting its lower level into a brand new space that's dedicated just for young adults. We're thrilled to offer Mahwah's teens and "tweens" a fun, comfortable and safe place to hang out, relax with friends or do homework.

The new space features cool "diner-style" booths, which are fantastic for those working on group projects. Monitors are installed at each booth so teens can plug in their laptops and work collaboratively. The Teen Space also includes 6 new HP computers - perfect for playing Minecraft or for researching an upcoming assignment.

If teens just want to unwind after a long day, they can watch a movie or play some video games on the huge 80" LCD monitor (don't worry, there are enough seats for everybody!) Looking for something a little more organized? Teen Librarian Denise Jukniewicz plans lots of fun and exciting programs each month, including anime club, LEGO club, trivia, afternoon movies, gaming tournaments and lots more!

Teens can also check out our extensive graphic novel and manga collections, borrow video games and all of the hottest new fiction books as well. Tech savvy teens can download e-books and stream music, movies and television shows right on their smart device or tablet too.

For more information about the Library, visit www.mahwahlibrary.org, "like" us on Facebook or contact us at 201-529-7323. ■



SENIOR ACTIVITY CENTER HAPPENINGS!

The Benefits of Afternoon Exercise – Come Join Us!

For those who find it tough to simply get out of bed in the morning, afternoon exercise has its advantages.

By the afternoon, the body is fully awake from a full day of activities so warming up takes less time. Your body's temperature naturally increases a few degrees by the afternoon, resulting in warmer muscles and a slight increase in your performance. In the afternoon you're less likely to have to rush off and more likely to devote quality time to your workout. Exercising in the afternoon also curbs your cravings, so you'll be less likely to snack later in the evening. Working out in the afternoon also gives you an opportunity to relax and clear your head from the busy day. Come visit us in the Senior Activity Center for one of our afternoon exercise classes:

Every Monday at 2:00 p.m. - Body Toning with Michele

Every Tuesday at 2:00 p.m. - Tai Chi + Pushhands with Sifu James Jan and Instructor Stacy Han

Other Programs and Services Offered:

Beginners Art Classes, Water Color Art Classes, Line Dancing, Aerobics, Zumba, Jazzercise, Pilates, Tai Chi Chih, Yoga, Chair Yoga, Dance Social, Pinochle, Canasta, Bridge, Mahjong, Memoir Writing Class, Current Events Discussion Group, Woodcarving, Knitting.

- Monthly Trips
- Monthly Lunch Program
- Constituent Services
- Blood Pressure Clinic
- Lectures and Presentation on Health and Senior Related topics

The Mahwah Senior Activity Center is located at 475 Corporate Drive in the lower level of the Richard J. Martel Municipal Building. The Senior Activity Center entrance is located in the rear of the building with convenient parking available. Our business hours are 8:00 a.m. until 4:00 p.m. Please call 201-529-5757 X 213 for more information. ■

MAHWAH POLICE DEPARTMENT OFFERS TIPS FOR INTERNET SAFETY

Steps To Help Guard Your Children's Privacy And Keep Them Safe On The Internet

Step 1. Be involved. Warn about dangers and set rules for where your child can and can't go on the Internet. Visit sites that your child frequents. Pay particular attention when sites collect personal information. Block inappropriate content. One of the best defenses is to block it before your child sees it. Consider implementing parental controls. There are many good parental control software options. See our Top-Rated Parental Control Software listing for suggestions. Almost all of them are free.

Step 2. Keep your computer in an open area. Not only does this accessibility deter children from doing something they're not allowed to do, but it also allows a parent the opportunity to intervene if you notice a behavior that could have serious negative consequences.

Step 3. Increase your security and privacy. Blocking inappropriate content is a great first step, but it's also a good idea to block sites and downloads that could be a risk to your security and privacy. Set limits on downloads. Teach children not to download software from unknown sources on the Internet and/or to ask your permission before they download anything. Use antivirus and antispyware software to detect, disable, or remove viruses, spyware and other unwanted software. Adjust web browser security settings. Internet Explorer helps you control your security and privacy preferences by allowing you to assign security levels to websites. Consider separate accounts. Most operating systems allow the option of creating a different user account for each user. If you're worried that your child may accidentally access, modify and/or delete your files, provide a separate account and decrease the amount of access and privileges.

Step 4. Monitor where your kids go online. It may not be realistic to be present whenever your children are online. It is possible to check later to see where your children have spent their time online. By reviewing the History list in Internet Explorer, you can see all the places your children visited online. To do so, click the History button on the browser toolbar.

Step 5. Remind children not to talk to strangers online. Real-time chats, social networking and instant messaging are wonderful ways for children to discuss their interest and develop friendships. But these tools also put children at risk of falling victim to imposters and predators.

To minimize your child's vulnerability, teach them to take precautions:

- Use only a first name or nickname to identify themselves.
- Never disclose a date of birth or age.
- Never disclose a phone number, address, or where they go to school.
- Never send photographs of themselves.
- Never agree to meet someone they met online without adult supervision.
- Configure your software to allow only approved contacts to help protect your children from being contacted by strangers while instant messaging.

Step 6. Keep lines of communication open. Let your children know that they can approach you with any Internet questions or concerns.

Top-Rated Parental Control Software – almost all of these are free!

1. App Certain;
2. DNS Angel;
3. Windows Live Family Safety
4. Qustodio;
5. Cold Turkey;
6. K-9 Browser;
7. Norton Family
8. Bitdefender Parental Control Free ■

MAHWAH CERT

PREPAREDNESS, SAFETY, AND SERVICE



CERT's Mission

Mahwah Community Emergency Response Team (CERT), and County Animal Response Team (CART), is made up of volunteer residents who are trained to support professional first responders (police, fire, EMTs, et al) in all types of emergency situations while serving the community in other ways during non-emergency times.

Ongoing Educational Training Courses and Meetings

- Current CERT members were offered refresher training on traffic and crowd control, as well as training for reporting missing persons.
- Each member of our team will be prepared to work in the Emergency Operations Center (EOC) when mobilized for any type of emergency. Knowing the procedures of the EOC is of the utmost importance. Capt. Stu Blank of the Mahwah Police Department and Ray Roe, Mahwah Emergency Management Coordinator conducted the training which included our involvement in these types of emergencies, EOC protocols and the proper handling of incoming calls transferred from the dispatchers on the PD switchboard. This was hands on training and everyone was required to work the telephones during each session.
- It is important that all of our team members are prepared to open and run a shelter should the need arise. We ran a full scale shelter exercise which included setting up the shelter with cots. After the shelter was completely set up and ready to receive clients, we went through the process of serving a meal to the clients. We reviewed shelter procedures and policies and then dismantled the shelter and put away all of the equipment and supplies. Mahwah CERT is on call to the Bergen County Office Emergency Management to support them should they need to open a county shelter.
- We welcomed the Program Manager of Disease Prevention and Control from the Bergen County Department of Health Services. She gave a presentation on Ebola, the flu, as well other viruses and where each stands in today's environment. Members of the Mahwah Office of Emergency Management joined our CERT team for this presentation.
- Allan Becker, our CERT Coordinator, gave a presentation on the Point of Distribution (POD). If in the event of any epidemic or natural disaster it is determined that oral



medication has to be distributed to first responders, the Mahwah CERT team is charged with that responsibility for the township. POD is defined as a place where mass distribution of medication will be distributed to a large group. We learned protocols for the distribution which must be rapid, safe and handled in an efficient manner. It is imperative that each team member is prepared to work at a POD if called upon.



Opportunities to Help Our Community

For the 7th consecutive year, 23 members of the Mahwah CERT team helped our community on a rotating basis for Mahwah Day. Their areas of responsibility included traffic control, crowd control, lost person booth and the information booth. All CERT members continue to stay up to date on all necessary training. Hundreds of participants were safely guided through the area at Commodore Perry field. The CERT team performed admirably as they have in the past.

Team News

We congratulate and welcome six recent graduates the Mahwah CERT team.

Interested in Becoming a Member?

More residents are seeing the benefit of attending the CERT/CART courses. The training course is offered evenings at the Bergen Law and Public Safety Institute in Mahwah. The next training session will be held in the fall and the dates will be announced in late spring. Applications can be obtained at mahwahcert@optonline.net. There is no cost to participate.

The training provides residents with basic skills and information on what to do before, during and after a disaster to aid themselves, their family and their community.

At the completion of the program, basic CERT safety equipment will be issued to each participant. Class size is limited, so early registration is encouraged to insure a place in this class.

For more information about Mahwah CERT, contact CERT Coordinator Allan Becker at (201) 960-1932 or mahwahcert@optonline.net

**Photos courtesy of CERT* ■



IMPORTANT DATES TO REMEMBER

Starting April 1, 2015 - residential curbside garbage pickup returns to twice a week.

Townwide Shredding Day: April 11, 2015 9 a.m. – 1 p.m. (Mahwah Residents Only)

Upper parking of the Municipal Building at 475 Corporate Drive.

Household shredding Only - limit 4 bags per resident - not to exceed 40 lbs per bag. NO plastic bags please.



UPCOMING 2015 RECREATION DEPARTMENT EVENTS

Dawn DaPuzzo, Director of Recreation

(201-529-5757 ext.254) • ddapuzzo@mahwahtwp.org

2015 Recreation Events Calendar:

- 4/25 Townwide Garage Sale
- 5/02 Youth Sports Parade (9:30 a.m.)
- 5/23 Fishing Contest at Silver Creek (10 a.m.)
- 5/25 Memorial Day Parade (10 a.m.)
- TBA Senior Picnic at CSP (12 p.m.)
- 7/7 Paddle Day at Lake Henry
- 9/19 21st Annual Mahwah Day
- 10/31 Halloween Parade at Municipal Bldg (5 p.m.)
- 11/11 Veterans Day Service at Veterans Memorial Park (11 a.m.)
- 12/06 Holiday Tree Lighting at Municipal Bldg (5 p.m.)

For more information on all our events, visit us on the web at: www.mahwahtwp.org. Go to Departments---Recreation Dept. for detailed info on all events, adult sports and summer recreation programs.

Mahwah Adult Sports:

The Mahwah Recreation Committee organizes several athletic programs for adults:

- Adult Co-ed Volleyball - Pick up league (fall/winter) until June
- Adult Men's Basketball - Pick up league (fall/winter) until June
- Adult Softball- Men's and Women's summer league
- Adult Co-ed Soccer- summer league
- Adult Co-ed Tennis- summer league

Registration forms are available in the "Forms Center" at www.Mahwahtwp.org

Summer Recreation:

Coordinators: Karen McGuire, Big Rec Deanna DeVencentis, Mini Rec

The 2015 Summer Recreation Program runs four, (1) one week sessions beginning June 24, 2015 and ending July 17, 2015. With the exception of week #1, the program will run Monday through Friday from 9 a.m. to 12 p.m. All children must be residents of Mahwah. There are two facilities available:

MINI Rec is for children entering K, 1st and 2nd grades in September 2015. This program is held at Joyce Kilmer School. **BIG Rec** is for children entering grades 3 through 8 in September 2015. This program is held at Ramapo Ridge School.

The Counselor in Training program is open to students entering grades 9 and 10 in September 2015.

Activities include Arts and Crafts, Games, Outdoor and Indoor structured sports and snack time. Mini Rec campers will also have story time and music. Big Rec campers attend the Mahwah Pool one day a week. Each camper will receive a Mahwah Summer Rec t-shirt. Any questions email: mahwahsummerrec@yahoo.com

Important Dates:

4/15/15 - Summer Rec Counselor Applications available.

5/01/15 - Summer Rec Registration Forms available.

All forms can be downloaded from the "Forms Center" at www.mahwahtwp.org. They are also available for pick up at the municipal building and will be distributed to the elementary schools.

5/6/15 - In-Person Counselor Application Day at Rec Building, corner of E. Ramapo Ave. and Island Road (6 - 7:30 p.m.)

5/20/15 - Deadline for Counselor Applications

5/20/15 - In-Person Summer Rec Registration at Rec Bldg (6 - 7:30 p.m.)

6/24/15- Summer Rec week #1

6/29/15- Summer Rec week #2

7/06/15- Summer Rec week #3

7/13/15- Summer Rec week #4

Mahwah Youth Sports:

The Mahwah Recreation Department does not organize youth sports teams. The **Township of Mahwah Youth Sports Boosters** handles registration, team / coach assignments and game / practice schedules. The web address for The Township of Mahwah Youth Sports Boosters is: www.tmysb.org.

The Township of Mahwah Youth Sports Boosters organizes many of the youth sports in Mahwah. They offer 14 different sports in three seasons. Registration for Winter Sports (Wrestling, Basketball and Roller Hockey) typically takes place at the end of September. Registration for Spring Sports (Baseball, Softball, Lacrosse, Street Hockey, Track and Tennis) typically begins in January. Please check their website, www.tmysb.org for more details and to register. Please consider volunteering to assist our youth sports in some way. Coaches and assistant coaches are always needed. Please note that all our coaches are required to undergo background checks and take a Coaches Certification class. If you are interested in coaching, please see the TMYSB website for information on these requirements.

If you have questions regarding the Sports Boosters, contact information can be obtained at the website by clicking the "CONTACT US" link at the top of the page.

General Information:

The Township of Mahwah has lightning detectors at the following fields:

Continental Soldiers Park, Commodore Perry, Airmount Facility, Swim Club – Mahwah Pool Facility

The following rules apply:

In the event of a thunder and lightning storm, the lightning detection system siren will sound, along with a strobe light, if there is a lightning strike within 5 miles. The initial siren will go off only once for 18 seconds but the strobe light will stay on for as long as it takes to clear. The important thing to know is that **IF THE STROBE LIGHT IS ON THERE IS LIGHTNING IN THE AREA**. When all is clear a horn will sound (for 18 sec.) and the strobe light will turn off. ■



Online Payment Now Available

The Mahwah Tax and Utilities Offices are now accepting website payments via check, credit card and debit card.

Visit our website at www.mahwahtwp.org, click on **Department**, choose **Tax Collector** or **Water/Sewer Billing & Collection**. At the end of the first paragraph is a link "**Click here to view property taxes online**" or "**Click here to view utility bills online**." Click on "**Make a Payment**" and follow the prompts. This takes you to a third party who collects the payments on our behalf. Please note there are fees associated with these website payments. These fees go to the third party and not the municipality. Note: Properties on Tax Sale are not able to make website payments.

NOTIFICATIONS FROM THE DEPARTMENT OF PUBLIC WORKS



GRASS CLIPPINGS

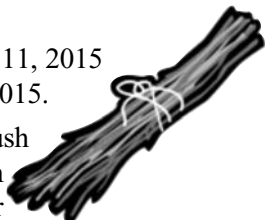
Curbside pick-up of grass clippings will begin Thursday, April 9, 2015 and continue through Friday, September 25, 2015. Pick-up will take place on Thursday and Friday of each week. Residents living in Recycling Sections 1,2, and 3 will have their grass clippings picked up on Thursdays. Residents living in Recycling Sections 4,5, and 6 will have their grass clippings picked up on Fridays. Grass will only be picked up in **BIODEGRADABLE PAPER BAGS**. Grass clippings will NOT be picked up if in plastic bags or open garbage cans. The Township does not supply biodegradable bags. Bags can be purchased at local stores.

Grass clippings can be dropped off at the Recycling Center located at 142 N. Railroad Avenue weekdays from 7:00 a.m. to 3:30 p.m. and Saturdays from 7:00 a.m. to 1:00 p.m. beginning Saturday, April 5, 2015 and concluding Saturday, Sept. 26, 2015.

BRUSH

Brush season will begin Saturday, April 11, 2015 and conclude Saturday, September 26, 2015.

There will be no curbside pick-up of brush offered by the Township. Residents can bring their brush to the Recycling Center on Saturdays ONLY between the hours of 7:30 a.m. and 12:30



p.m. NO EXCEPTIONS. Please see schedule for dates that recycling center is closed.

Brush must be prepared as follows:

- Anything under four (4) feet must be bundled.
- Brush over four (4) feet must have stems or butts facing the same way.
- Stumps and roots must be removed.
- Firewood, roots and logs are also accepted.

GARBAGE COLLECTION

Two (2) times per week garbage collection will resume Wednesday, April 1, 2015 and conclude Wednesday, Sept. 30, 2015.

- If your collection is Monday, your second collection will be Thursday.
- If your collection is Tuesday, your second collection will be Friday.
- If your collection is Wednesday, your second collection will be Saturday.



There will be no garbage collection on Monday May 25, Saturday July 4, and Monday September 7. If you are scheduled for pickup on these dates, your pick up will be the following day. ■

TOWNSHIP OF MAHWAH

475 Corporate Drive, Mahwah, NJ 07430

Main Number201-529-5757
 Mayor/Administration Fax201-529-0061
 Clerk/Council Fax201-529-5740
 Websitewww.mahwahtwp.org
 Mahwah Cable StationCablevision Channel 78
 Verizon Channel 33

Mayor

William C. Laforet(W) 201-529-5757 ext. 267 / (C) 201-452-2477

Township Council

John Roth, President201-529-9358
 Steven Sbarra, Vice President201-825-1431
 Mary Amoroso201-512-1251
 Janet Ariemma201-327-5359
 H. Lisa DiGiulio201-934-8313
 Robert Hermansen201-376-4332
 Jonathan Wong201-747-8817



Business AdministratorBrian Campion, CPA201-529-5757 ext. 265
 Administrative AssistantDenise M. Storms, CPA201-529-5757 ext. 264
 Administration OfficeDeb Burns, Exec. Secretary201-529-5757 ext. 262
 Board of EducationC. Lauren Schoen, Ed.D, Superintendent201-762-2403
 Board of HealthAngela Musella201-529-5757 ext. 210
 CFO/TreasurerKenneth Sesholtz201-529-5757 ext. 256
 Construction OfficialDaniel Mairella201-529-5757 ext. 241
 Emergency ServicesRaymond R. Roe, Director201-831-2075

Emergency ManagementRaymond R. Roe, Director201-831-2075
 Environmental CommissionJennifer Storms, Secretary201-529-5757 ext. 271
 Fire Prevention, (non-emergency)Timothy Hetzel201-529-5757 ext. 240
 Fire DepartmentTom Loreto, Chief201-523-1372
 HistorianCarol W. Greene201-327-0040
 Historic Preservation CommissionDenise M. Storms, Secretary201-529-5757 ext. 264
 Housing CommissionWilliam Savino, President201-529-5757 ext. 205
 Human ServicesDorothy McDonough, Director201-529-5757 ext. 205
 Access TransportationDorothy McDonough, Director201-529-2691
 Affordable HousingDorothy McDonough, Director201-529-5757 ext. 205
 LibraryKurt Haderler, Director201-529-READ
 Municipal Court Admin.Lorraine Cuomo, C.M.C.A.201-529-2862
 Municipal PoolJay Esposito, Manager201-529-4949
 Planning Board/ZoningMichael J. Kelly, Admin Officer201-529-5757 ext. 245
 PoliceJames N. Batelli, Chief201-529-1000 ext. 200
 Public Works DepartmentEd Sinclair, Director201-529-3344 ext. 101
 Recreation DepartmentDawn DaPuzzo, Director201-529-5757 ext. 254
 Recycling CenterJohn Soha, Foreman/Recycling Coord. 201-529-2991 ext. 105
 Road DepartmentGlenn Dowson, Superintendent201-529-3344 ext. 102
 Senior Center CoordinatorSusanne Small201-529-5757 ext. 213
 Tax AssessorStuart Stolarz201-529-5757 ext. 229
 Tax CollectorElizabeth M. Villano201-529-5757 ext. 224
 Township ClerkKathrine G. Coviello, RM/C/MC/MNC201-529-5757 ext. 230
 Utility CollectorMaryann S. Malone201-529-5757 ext. 221
 Sewer UtilityMichael McClanahan, Foreman201-529-4413 ext. 108
 Water/SewerPaul Scherer, Superintendent201-529-4413 ext. 107

For Current Township Information Visit the Township Website www.mahwahtwp.org



Township of Mahwah

475 Corporate Drive
Mahwah, NJ 07430

PRSR STD
ECRWSS
U.S. Postage
PAID
Permit 340
Mahwah, NJ 07430

POSTAL CUSTOMER
MAHWAH, NJ 07430



Printed on 100% Recycled paper.

| 2015 Recycling Schedule | | | | | | |
|--------------------------------|----------------|----------------|----------------|----------------|----------------|----------------|
| Month | Sect. 1 | Sect. 2 | Sect. 3 | Sect. 4 | Sect. 5 | Sect. 6 |
| January | 5, 22 * | 6, 20 | 7, 21 | 12, 26 | 13, 27 | 14, 28 |
| February | 2, 19* | 3, 17 | 4, 18 | 9, 23 | 10, 24 | 11, 25 |
| March | 2,16,30 | 3, 17, 31 | 4, 18 | 9, 23 | 10, 24 | 11, 25 |
| April | 13, 27 | 14, 28 | 1, 15, 29 | 6, 20 | 7, 21 | 8, 22 |
| May | 11, 28 | 12, 26 | 13, 27 | 4, 18 | 5, 19 | 6, 20 |
| June | 8, 22 | 9, 23 | 10, 24 | 1, 15, 29 | 2, 16, 30 | 3, 17 |
| July | 6, 20 | 7, 21 | 8, 22 | 13, 27 | 14, 28 | 1, 15, 29 |
| August | 3, 17, 31 | 4, 18 | 5, 19 | 10, 24 | 11, 25 | 12, 26 |
| September | 14, 28 | 1, 15, 29 | 2, 16, 30 | 10 *, 21 | 8, 22 | 9, 23 |
| October | 12, 26 | 13, 27 | 14, 28 | 5 *, 19 | 6, 20 | 7, 21 |
| November | 9, 23 | 10, 24 | 12 *, 25 | 2, 16, 30 | 5 *, 17 | 4, 18 |
| December | 7, 21 | 8, 22 | 9, 23 | 14, 28 | 1, 15, 29 | 2, 16, 30 |

***Indicates Holiday Schedule**

Recycling Closed:

Jan. 3; Feb. 14; Apr. 4; May 23; July 4; Sept. 5; Oct. 17; Nov. 14,18; Dec 26